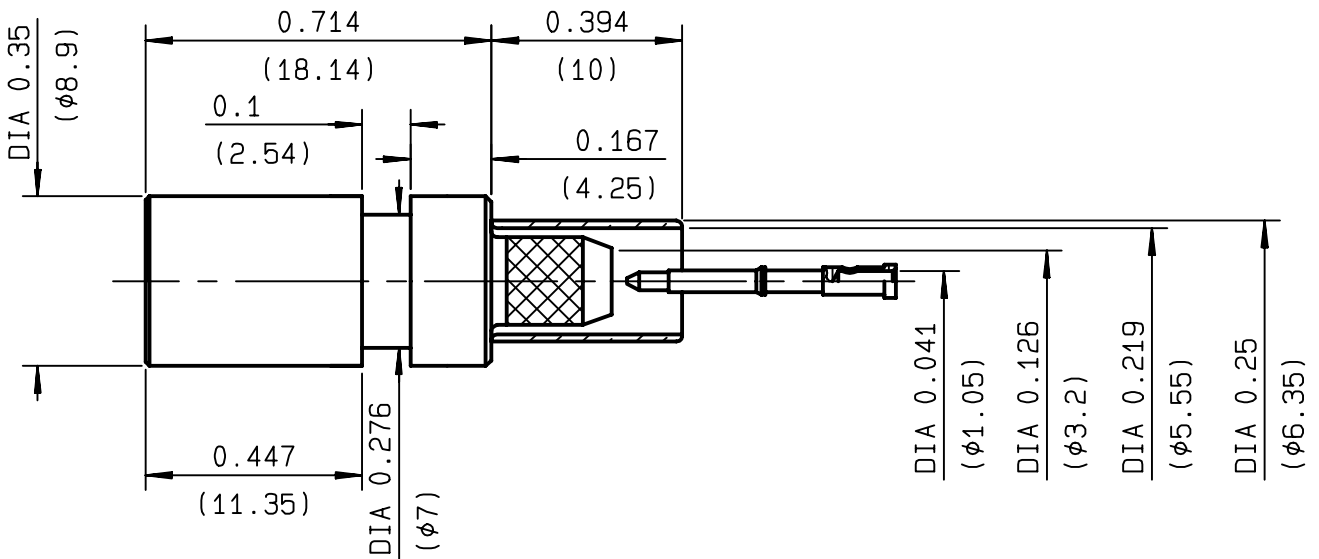


**SLIDE-ON PLUG CRIMP TYPE  
CABLE 5/50 S**

**R124.075.520**  
**SERIES SMA-COM**



NOMINAL IMPEDANCE	<b>50</b> Ω
FREQUENCY RANGE	<b>0-12.4</b> GHz
TEMPERATURE RATING	<b>-40/+70</b> °C
V.S.W.R	<b>1.15</b> + <b>.01</b> x F(GHz)Maxi
RF INSERTION LOSS	<b>0.05</b> √F(GHz) dB Maxi
VOLTAGE RATING	<b>335</b> Veff Maxi
DIELECTRIC WITHSTANDING VOLTAGE	<b>1000</b> Veff Mini
INSULATION RESISTANCE	<b>5000</b> MΩMini
HERMETIC SEAL	<b>NA</b> Atm.cm <sup>3</sup> /s
LEAKAGE (pressurized only)	<b>NA</b>
MECHANICAL DURABILITY	<b>500</b> Cycles
WEIGHT	gr
SPECIFICATION	

CABLES : **KX 15**  
**RG 141**  
**RG 58**

OTHERS CHARACTERISTICS

CABLE RETENTION	<b>180</b> N Mini
CENTER CONTACT RETENTION	
Axial force - mating end	<b>NA</b> N Mini
Axial force - opposite end	<b>NA</b> N Mini
Torque	<b>NA</b> cm.N Mini
RECOMMENDED TORQUES	
Mating	<b>NA</b> cm.N
Panel nut	<b>NA</b> cm.N
Clamp nut	<b>NA</b> cm.N

CONNECTOR PARTS	MATERIALS	FINISH	(all values are given ) in micrometers
BODY	BRASS	NICKEL 2	
OUTER CONTACT	BERYLLIUM COPPER	NICKEL 2	
CENTER CONTACT	BRASS	GOLD 1.3 OVER NICKEL 2	
INSULATOR	PTFE	-	
GASKET		-	
OTHERS PIECES			

ISSUE	CREATION DATE	FILE PART-NUMBER
<b>9847B00</b>	<b>11/12/1996</b>	<b>96-0400-278</b>



**RADIALL®**

RAFFAELI

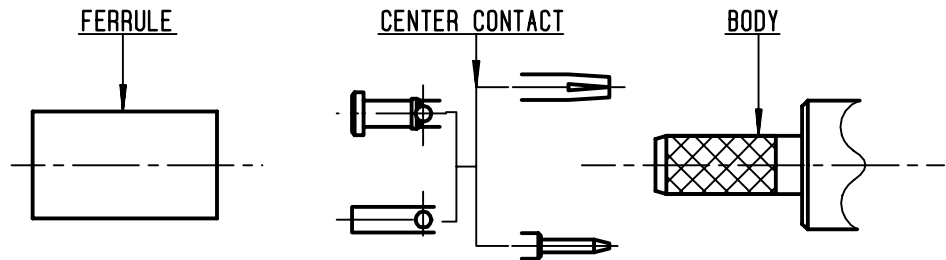
The information given here is subject to change without notice.  
Design changes may be in order to improve the product .

*Connect to the future*



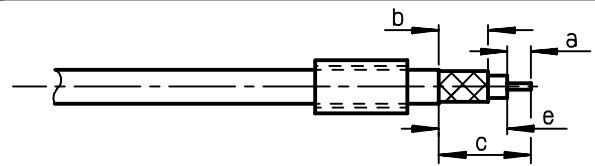
**R124.075.520**

ISSUE 9847B00 SERIES SMA-COM



①

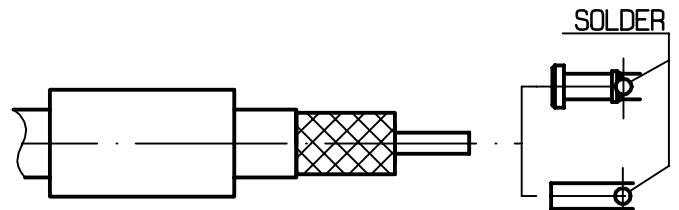
Slide onto the cable the ferrule .  
Strip the cable .  
-  
-



Stripping	a	b	c	d	e
inch	0.098	0.25	0.492	0	0.394
mm	2.5	6.35	12.5		10

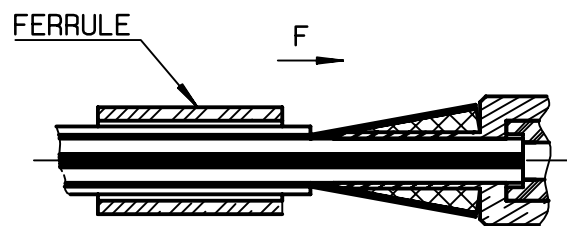
②

Slide center contact on until it bottoms against cable dielectric .  
Solder center contact .  
Clean soldered area .  
-  
-



③

Fan the braid .  
Slide cable into body until it bottoms against insulator .  
Slide ferrule over the braid .  
(In direction F)



④

Crimp the ferrule with crimping tool R 282 223 000 ( Hex. : 0.213 ) or crimping tool R 282 293 000 ( M22520/5-01 ) and dies R 282 235 011 ( M22520/5-11 )  
Cut the excess of braid if necessary.  
-  
-  
-  
-

